

# HARRIS COUNTY FELONY PRETRIAL DETENTION REPORT

Brought to you by the *texas* Center for Justice and Equity and researchers at Harvard University

May 21, 2023 - May 27, 2023



## Katherine Thomas – 184<sup>th</sup> District Court

Among current pretrial jail inmates assigned to Judge Thomas:

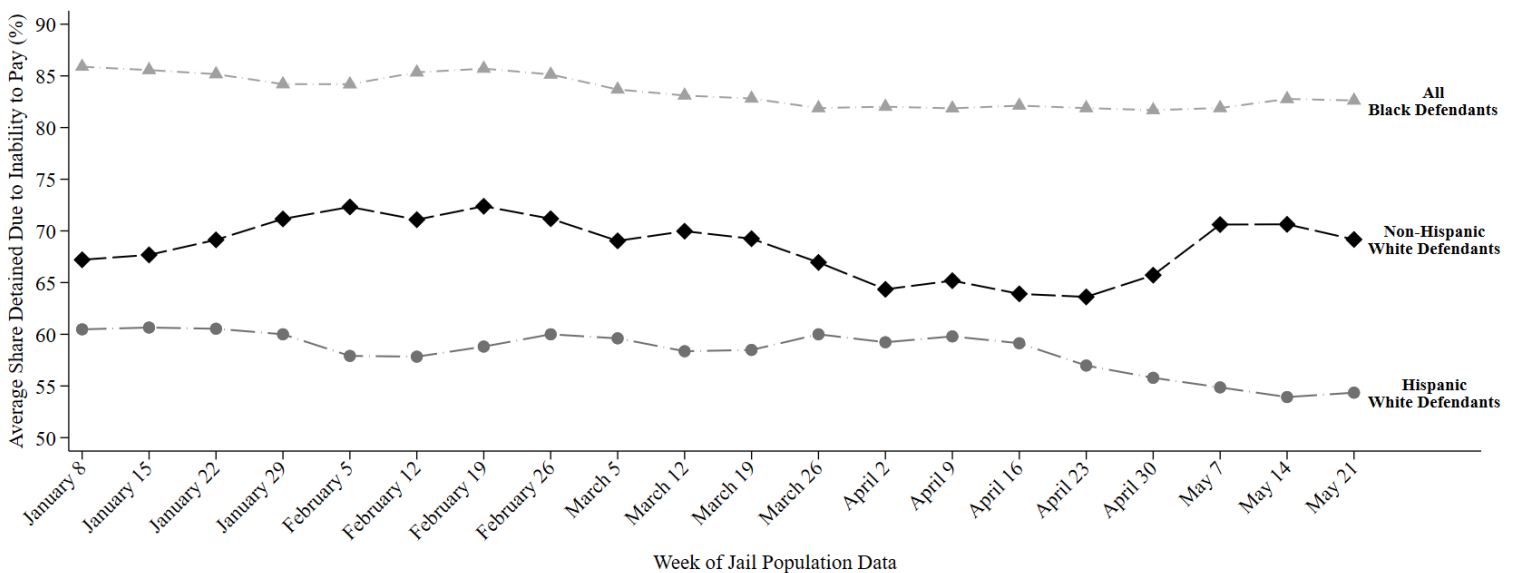
- **83% of Black defendants (119 out of 144)**
- **54% of Hispanic White defendants (58 out of 107)**
- **69% of non-Hispanic White defendants (42 out of 61)**

were detained per night based on inability to pay

Last week, among current pretrial jail inmates assigned to **Judge Thomas**, **83% of Black defendants (119 out of 144 on an average night)**, **54% of Hispanic White defendants (58 out of 107 on an average night)**, and **69% of non-Hispanic White defendants (42 out of 61 on an average night)** were detained in Harris County Jail because they couldn't afford money bail.

Judge Thomas's **racial difference in the share detained due to inability to pay for Black and Non-Hispanic White defendants** is among the **50% worst** in Harris County. Her **racial difference in the share detained due to inability to pay for Hispanic and Non-Hispanic White defendants** is among the **50% best** in Harris County.

## Track Judge Thomas's Share Detained Due to Inability to Pay



This report uses jail population data provided by Harris County. Share detained due to inability to pay represents the percent of current pretrial jail inmates assigned to this judge who were detained because they couldn't afford money bail.