

HARRIS COUNTY FELONY PRETRIAL DETENTION REPORT

Brought to you by the Texas Center for Justice and Equity and researchers at Harvard University

January 15, 2023 - January 21, 2023



Ana Martinez – 179th District Court

Among current pretrial jail inmates assigned to Judge Martinez:

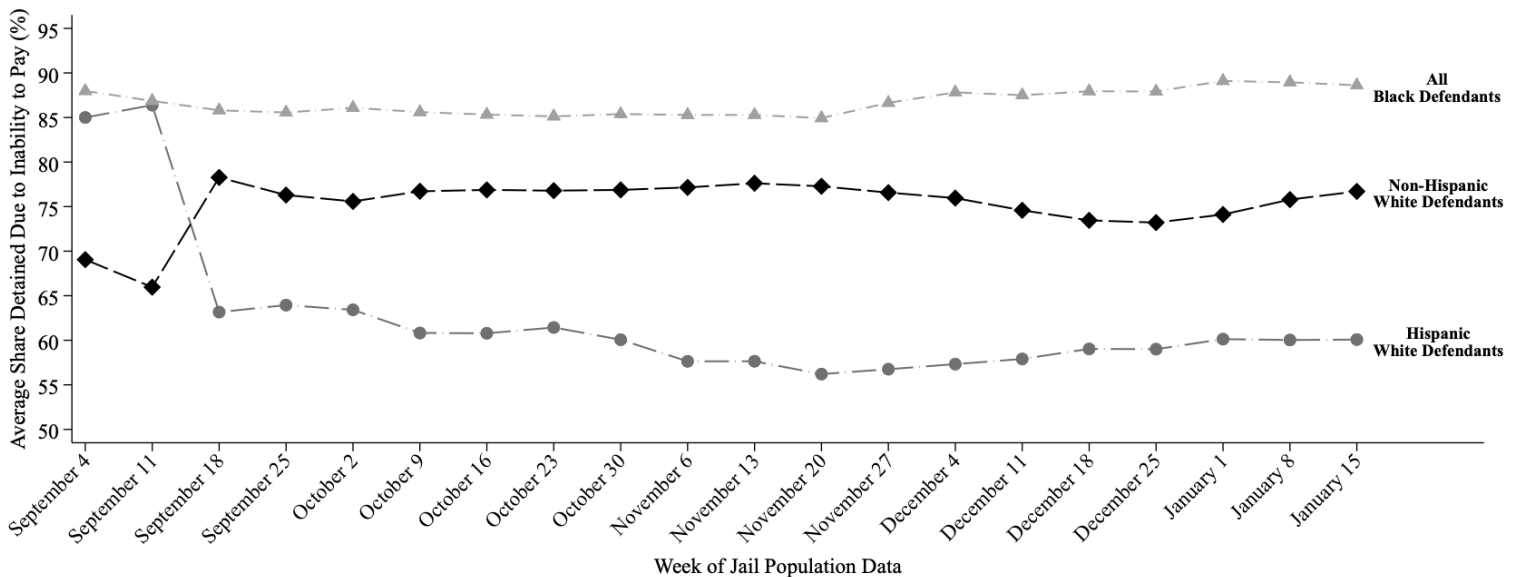
- **89% of Black defendants (124 out of 141)**
- **60% of Hispanic White defendants (50 out of 83)**
- **77% of non-Hispanic White defendants (51 out of 66)**

were detained per night based on inability to pay

Last week, among current pretrial jail inmates assigned to Judge Martinez, 89% of Black defendants (124 out of 141 on an average night), 60% of Hispanic White defendants (50 out of 83 on an average night), and 77% of non-Hispanic White defendants (51 out of 66 on an average night) were detained in Harris County Jail because they couldn't afford money bail.

Judge Martinez's racial difference in the share detained due to inability to pay for Black and Non-Hispanic White defendants is among the 50% best in Harris County. Her racial difference in the share detained due to inability to pay for Hispanic and Non-Hispanic White defendants is among the 50% worst in Harris County.

Track Judge Martinez's Share Detained Due to Inability to Pay



This report uses jail population data provided by Harris County. Share detained due to inability to pay represents the percent of current pretrial jail inmates assigned to this judge who were detained because they couldn't afford money bail.