

# HARRIS COUNTY FELONY PRETRIAL DETENTION REPORT

Brought to you by the Texas Center for Justice and Equity and researchers at Harvard University

February 13, 2022 - February 19, 2022



## Amy Martin – 263<sup>rd</sup> District Court

Among current pretrial jail inmates assigned to Judge Martin:

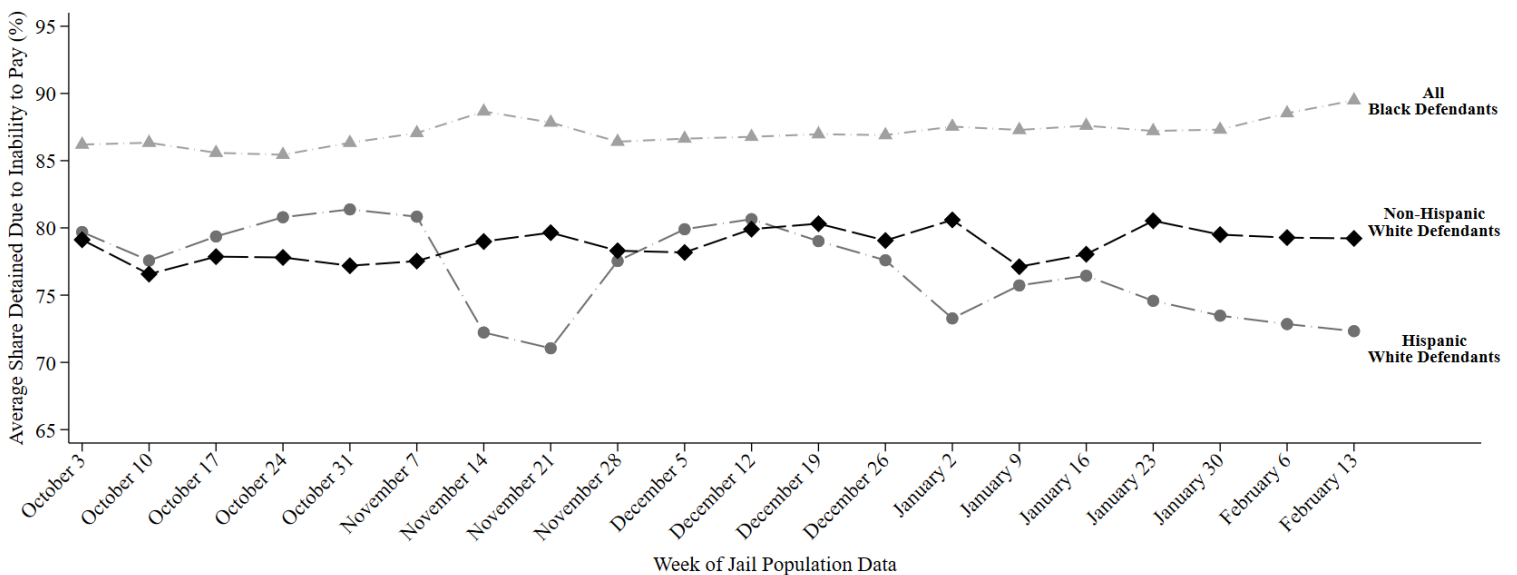
- **89% of Black defendants (135 out of 151)**
- **72% of Hispanic White defendants (40 out of 55)**
- **79% of non-Hispanic White defendants (55 out of 69)**

were detained per night based on inability to pay

Last week, among current pretrial jail inmates assigned to Judge Martin, 89% of Black defendants (135 out of 151 on an average night), 72% of Hispanic White defendants (40 out of 55 on an average night), and 79% of non-Hispanic White defendants (55 out of 69 on an average night) were detained in Harris County Jail because they couldn't afford money bail.

Judge Martin's racial difference in the share detained due to inability to pay for Black and Non-Hispanic White defendants is among the 25% best in Harris County. Her racial difference in the share detained due to inability to pay for Hispanic and Non-Hispanic White defendants is among the 50% worst in Harris County.

### Track Judge Martin's Share Detained Due to Inability to Pay



This report uses jail population data provided by Harris County. Share detained due to inability to pay represents the percent of current pretrial jail inmates assigned to this judge who were detained because they couldn't afford money bail.