

# HARRIS COUNTY FELONY PRETRIAL DETENTION REPORT

Brought to you by the Texas Center for Justice and Equity and researchers at Harvard University

January 1, 2023 - January 7, 2023



## Lori Chambers Gray – 262<sup>nd</sup> District Court

Among current pretrial jail inmates assigned to Judge Chambers Gray:

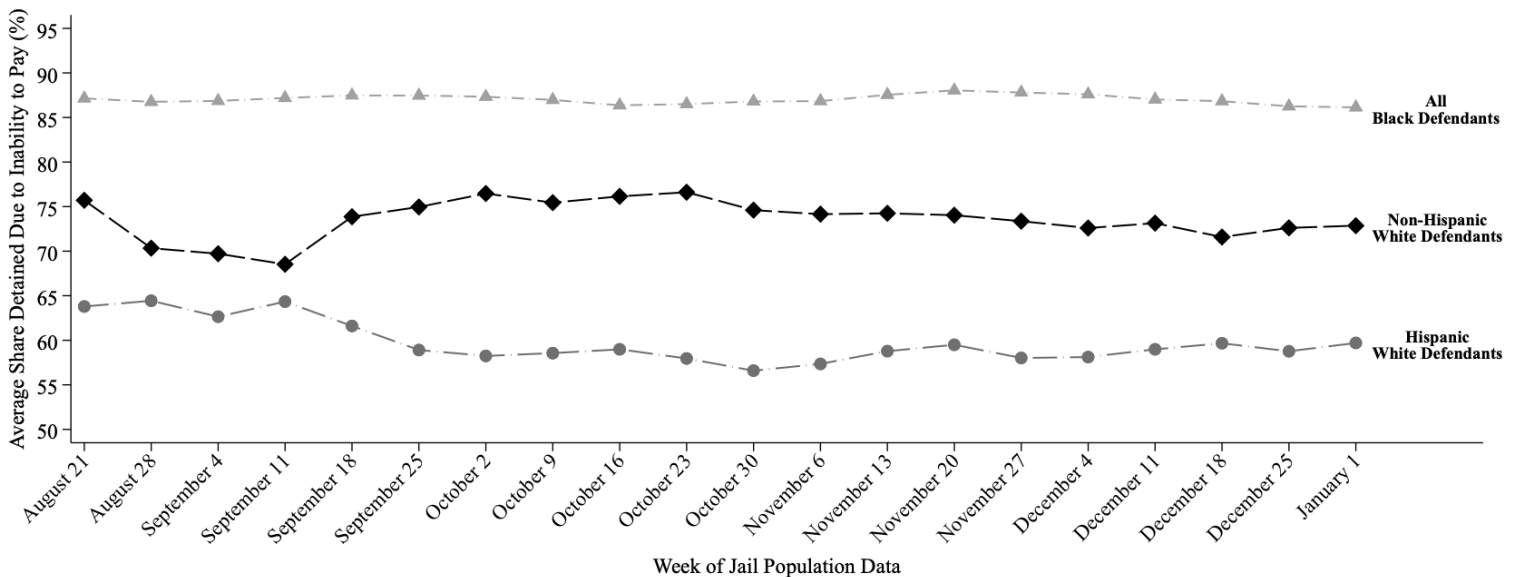
- **86% of Black defendants (217 out of 252)**
- **60% of Hispanic White defendants (69 out of 116)**
- **73% of non-Hispanic White defendants (75 out of 103)**

were detained per night based on inability to pay

Last week, among current pretrial jail inmates assigned to Judge Chambers Gray, 86% of Black defendants (217 out of 252 on an average night), 60% of Hispanic White defendants (69 out of 116 on an average night), and 73% of non-Hispanic White defendants (75 out of 103 on an average night) were detained in Harris County Jail because they couldn't afford money bail.

Judge Chambers Gray's racial difference in the share detained due to inability to pay for Black and Non-Hispanic White defendants is among the 50% worst in Harris County. Her racial difference in the share detained due to inability to pay for Hispanic and Non-Hispanic White defendants is among the 50% best in Harris County.

### Track Judge Chambers Gray's Share Detained Due to Inability to Pay



This report uses jail population data provided by Harris County. Share detained due to inability to pay represents the percent of current pretrial jail inmates assigned to this judge who were detained because they couldn't afford money bail.